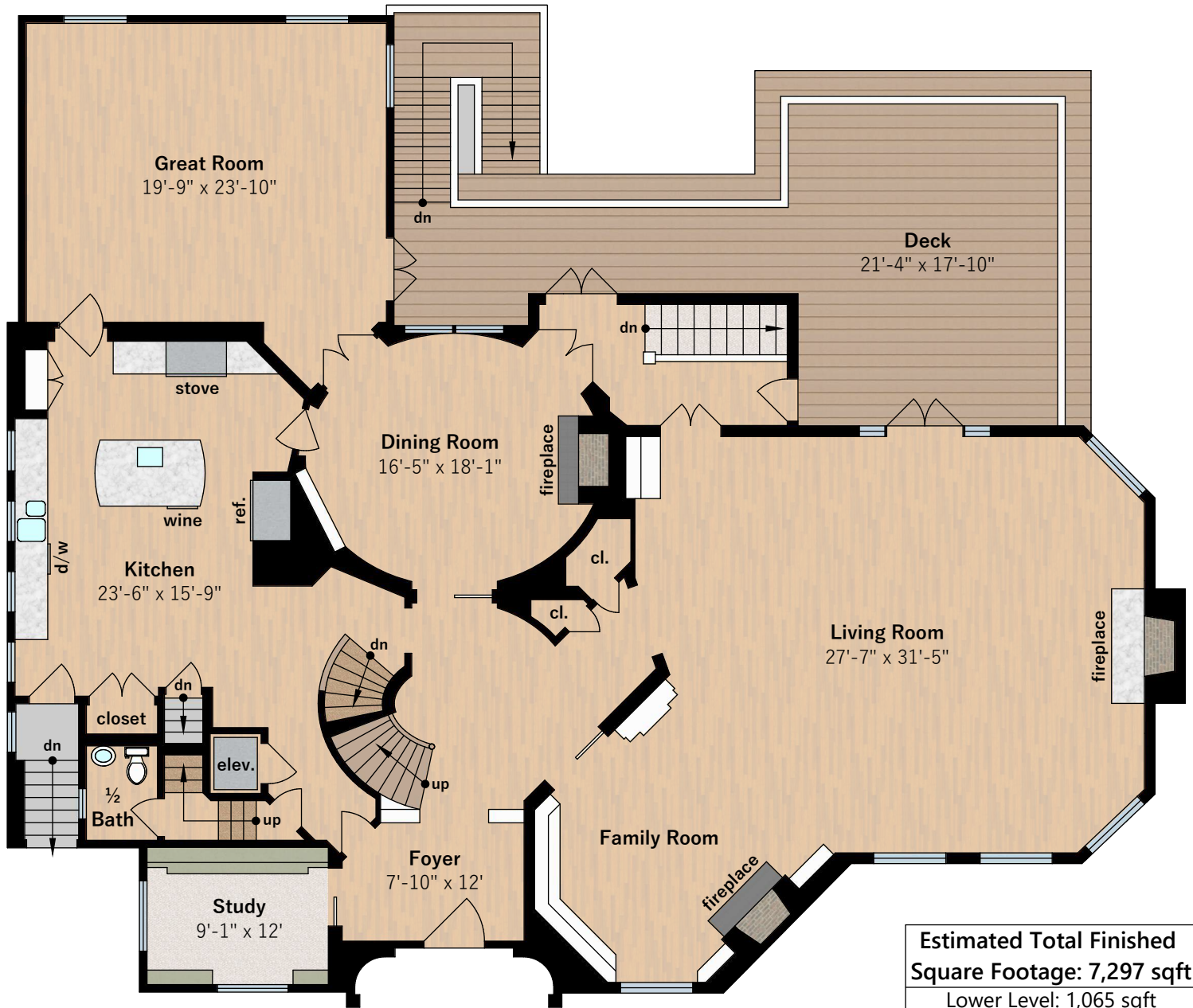


236 Sea View Avenue

Piedmont, CA 94610



Main Level
approx. 3,351 sqft

Estimated Total Finished Square Footage: 7,297 sqft
Lower Level: 1,065 sqft
Main Level: 3,351 sqft
Upper Level: 2,881 sqft

Estimated Total Unfinished Square Footage: 2,235 sqft
Lower Level: 1,039 sqft
Attic Level: 374 sqft
Garage Upper Level: 545 sqft
Garage Lower Level: 277 sqft

Interior room dimensions are shown, and all square footage measured from perimeter of exterior walls. Decks, porches, and patios are not included in calculations.
Measured on March 24th, 2024

Any and all information on this drawing is for illustrative purposes only and is deemed reliable, but not guaranteed. All information requires independent verification.



www.heafeybaum.com

236 Sea View Avenue

Piedmont, CA 94610



Estimated Total Finished Square Footage: 7,297 sqft
Lower Level: 1,065 sqft
Main Level: 3,351 sqft
Upper Level: 2,881 sqft

Estimated Total Unfinished Square Footage: 2,235 sqft
Lower Level: 1,039 sqft
Attic Level: 374 sqft
Garage Upper Level: 545 sqft
Garage Lower Level: 277 sqft

Interior room dimensions are shown, and all square footage measured from perimeter of exterior walls. Decks, porches, and patios are not included in calculations.
Measured on March 24th, 2024

Any and all information on this drawing is for illustrative purposes only and is deemed reliable, but not guaranteed. All information requires independent verification.



www.heafeybaum.com

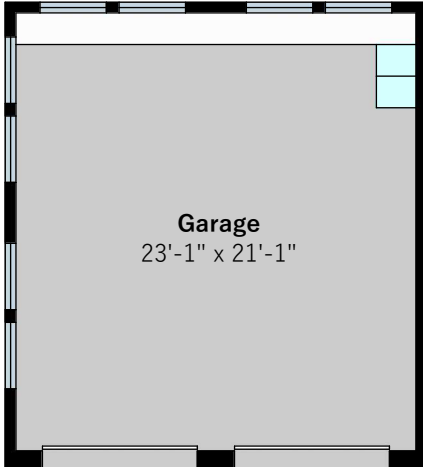
236 Sea View Avenue

Piedmont, CA 94610



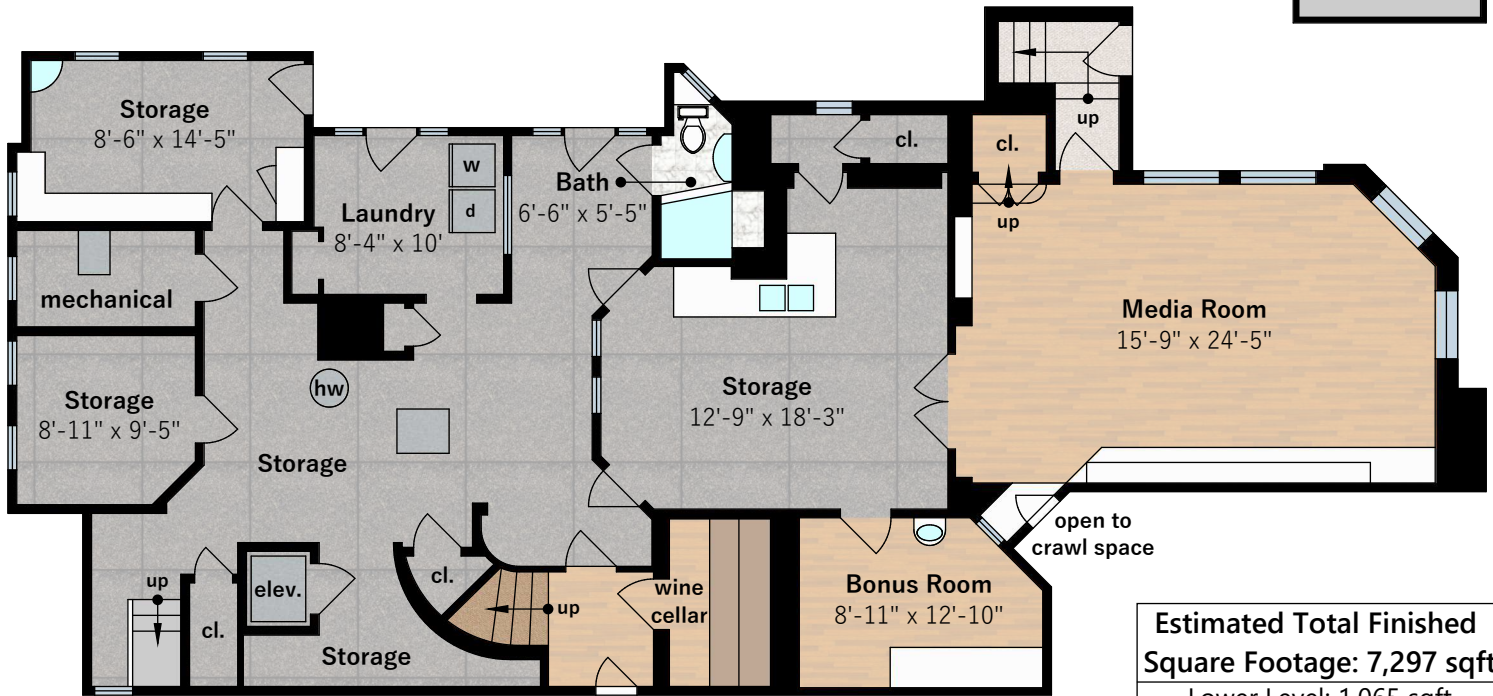
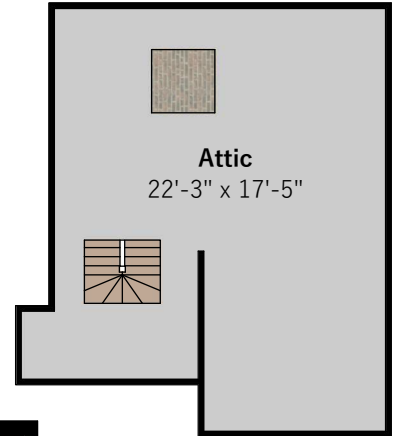
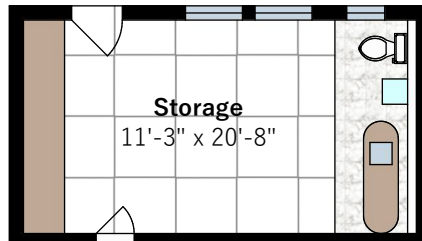
Garage Upper Level

approx. 545 sqft



Garage Lower Level

approx. 545 sqft



Lower Level

approx. 1,065 sqft

Estimated Total Finished Square Footage: 7,297 sqft
Lower Level: 1,065 sqft
Main Level: 3,351 sqft
Upper Level: 2,881 sqft

Estimated Total Unfinished Square Footage: 2,235 sqft
Lower Level: 1,039 sqft
Attic Level: 374 sqft
Garage Upper Level: 545 sqft
Garage Lower Level: 277 sqft

Interior room dimensions are shown, and all square footage measured from perimeter of exterior walls. Decks, porches, and patios are not included in calculations.
Measured on March 24th, 2024

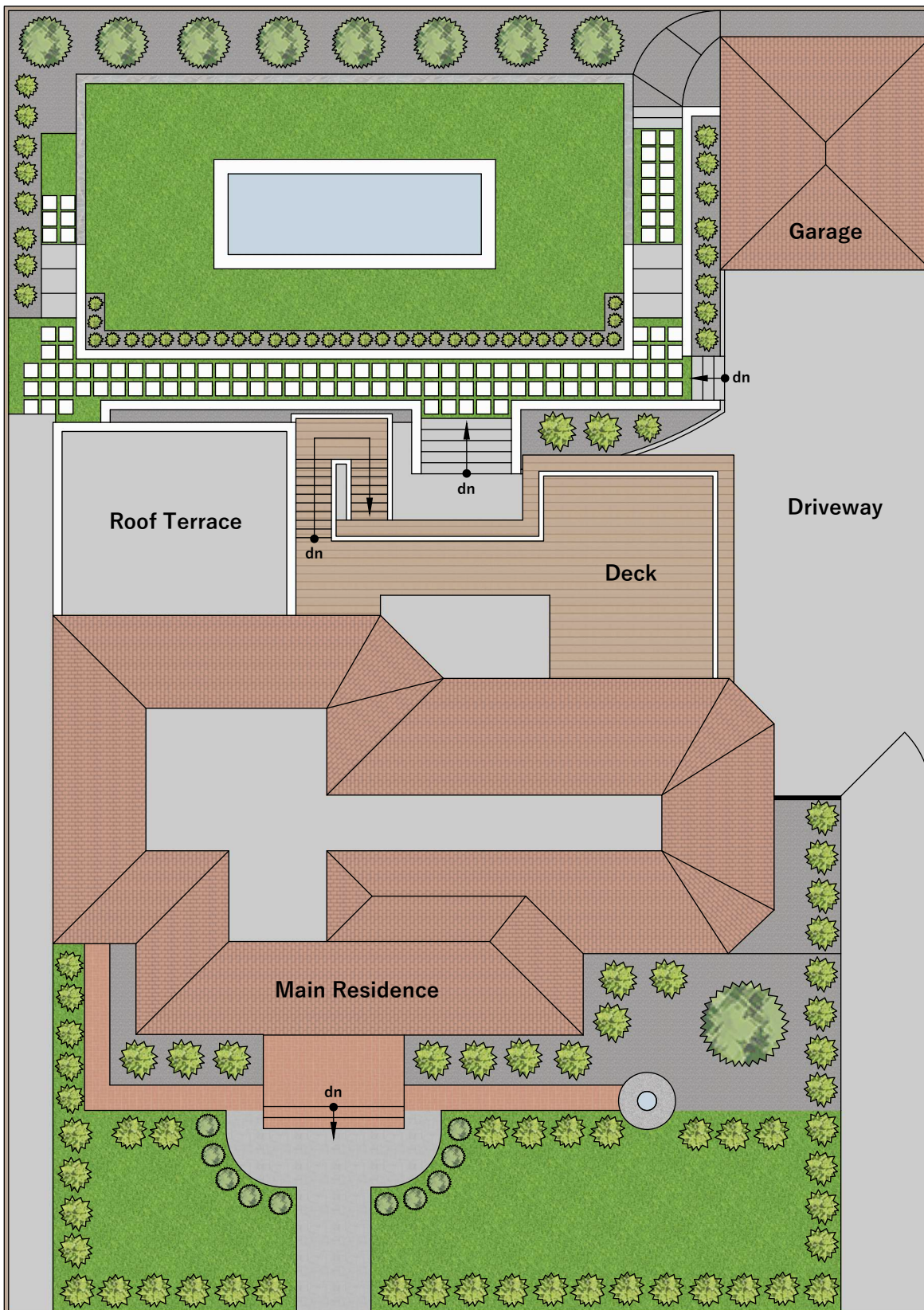
Any and all information on this drawing is for illustrative purposes only and is deemed reliable, but not guaranteed. All information requires independent verification.



www.heafeybaum.com

236 Sea View Avenue

Piedmont, CA 94610



Sea View Avenue

Site Plan

lot size approx. .31 acres

Any and all information on this drawing is for illustrative purposes only and is deemed reliable, but not guaranteed. All information requires independent verification.



www.heafeybaum.com